

Pulmonary Function Trajectories in Older Adults: Association with All-Cause Mortality

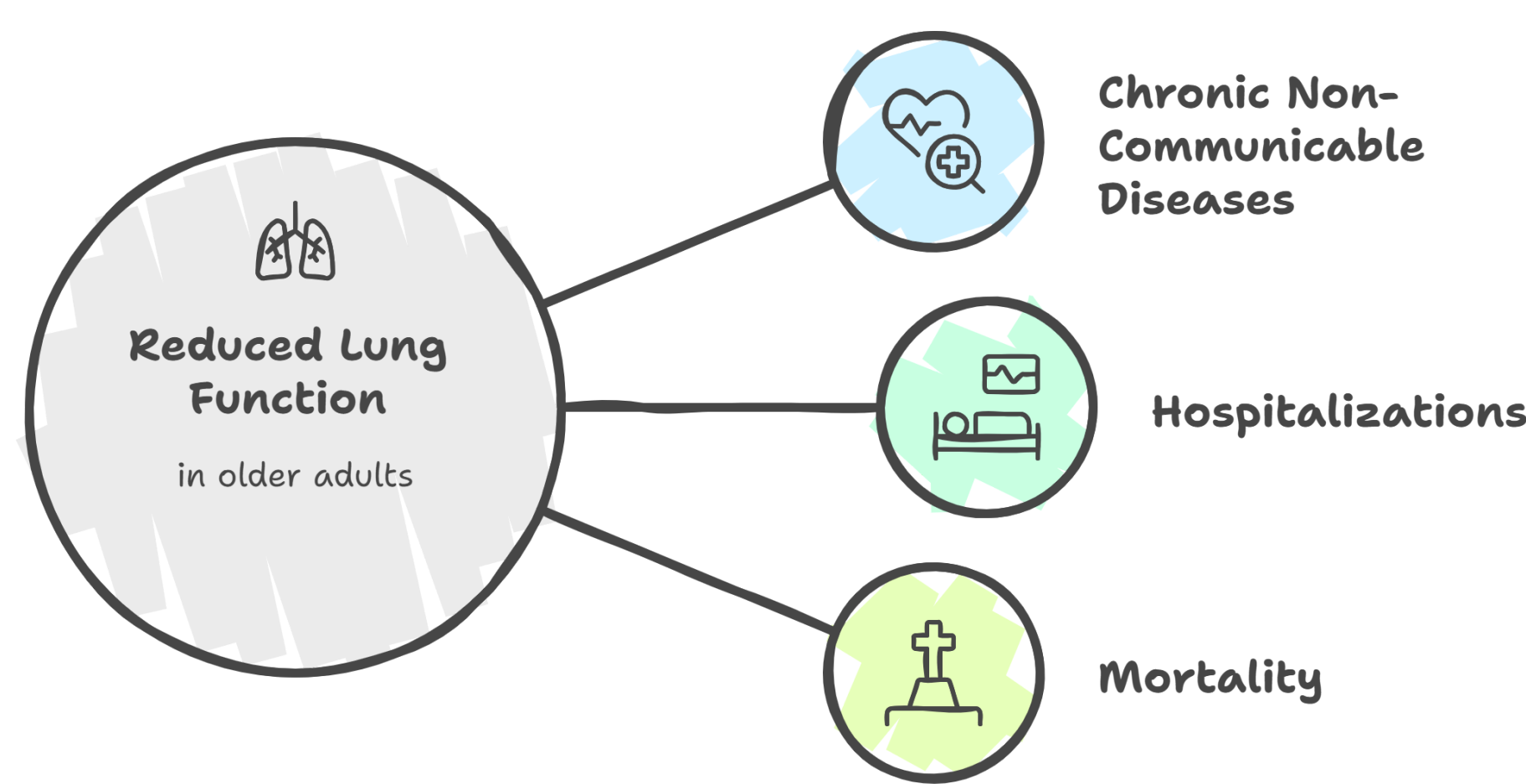
Ione Schneider¹, Lais Fontanela¹, Cesar de Oliveira², Danielle Vieira¹

¹ Federal University of Santa Catarina, Brazil; ² University College London, United Kingdom.

Background

Results

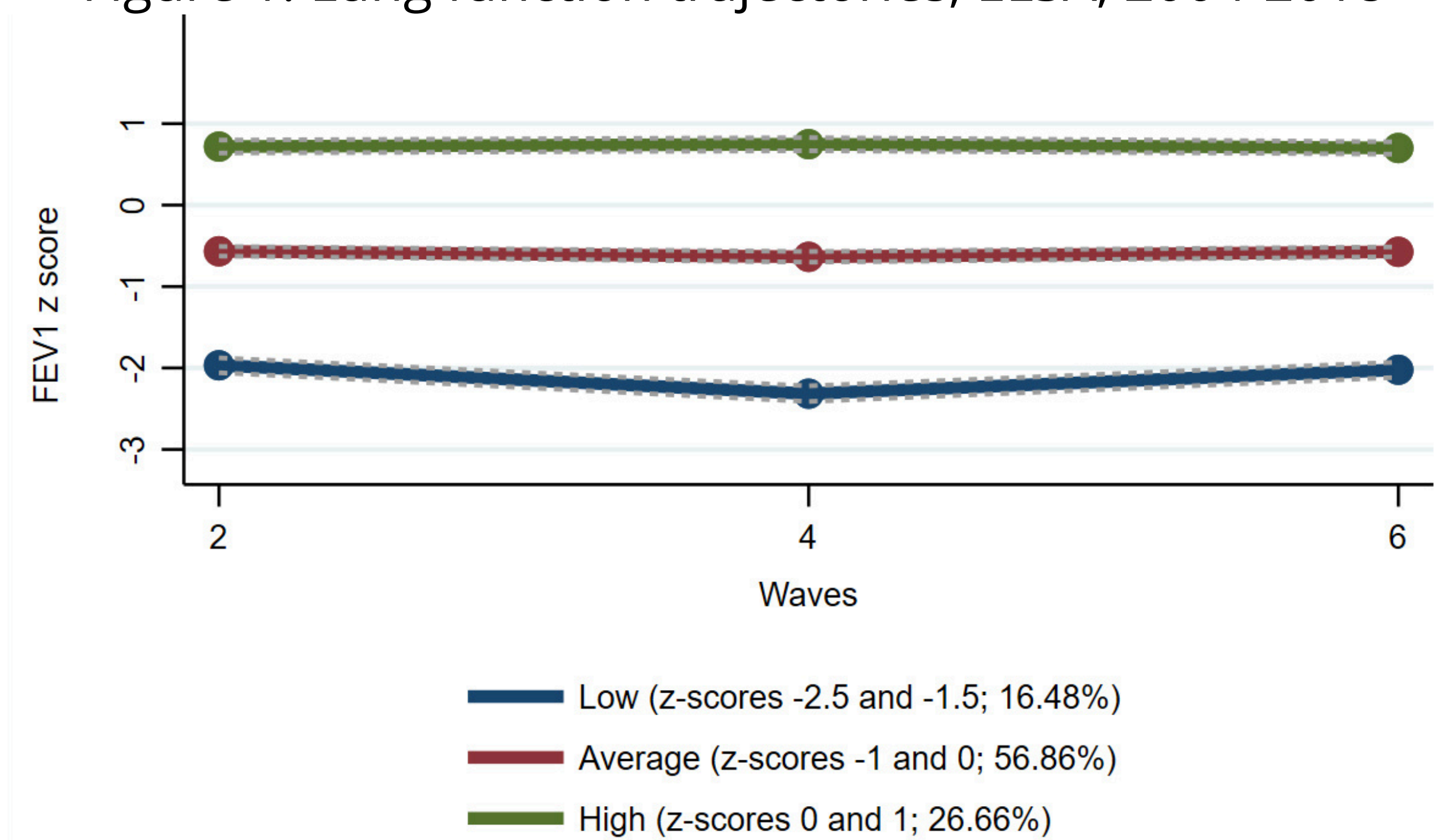
Unveiling the Impact of Reduced Lung Function



To identify PF trajectories in older adults and examine their association with all-cause mortality.

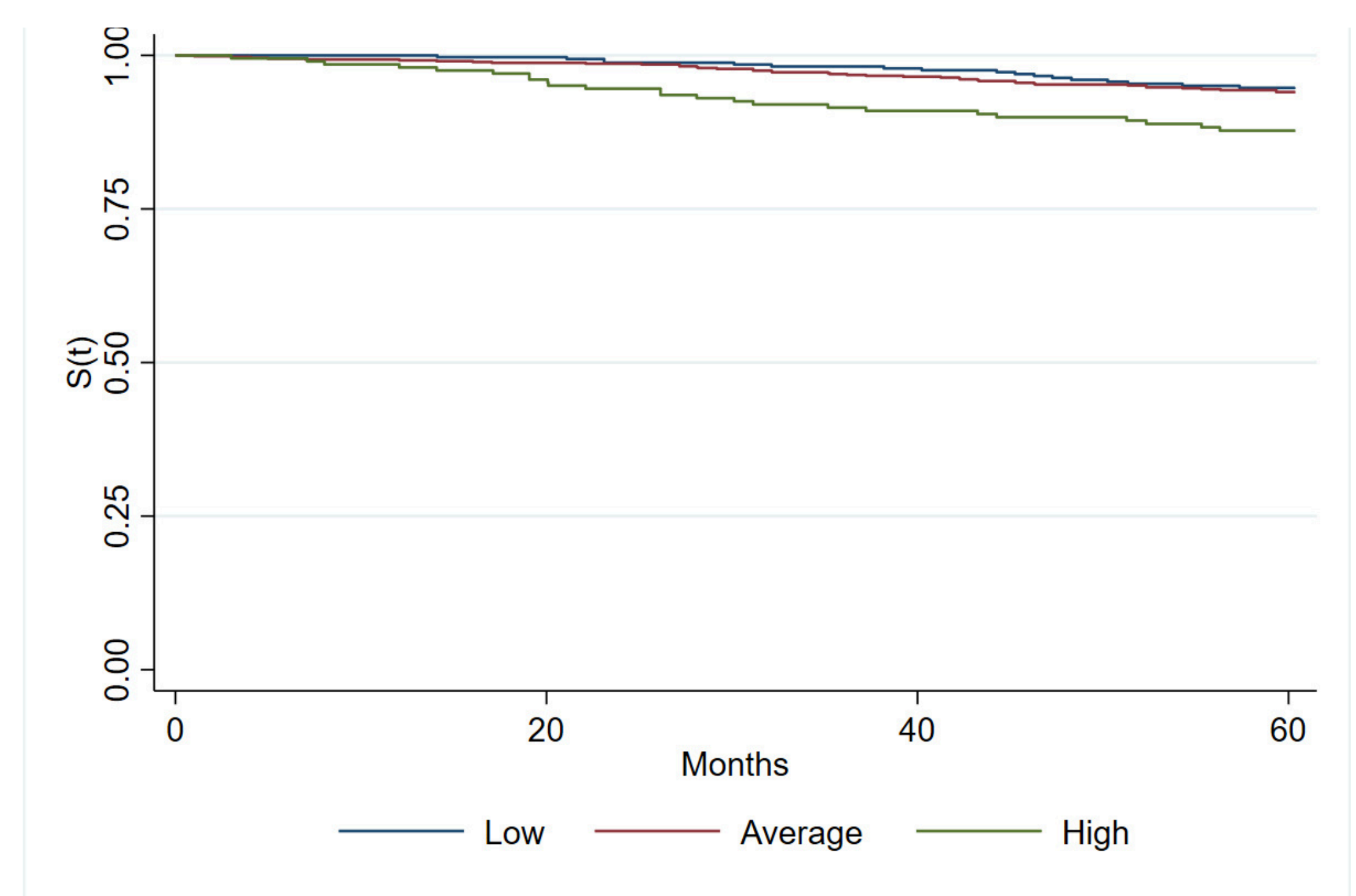
Demographics characteristics (n=2,427)
 Female → 54.68%
 50-69 years old → 49.38%

Figure 1. Lung function trajectories, ELSA, 2004-2018

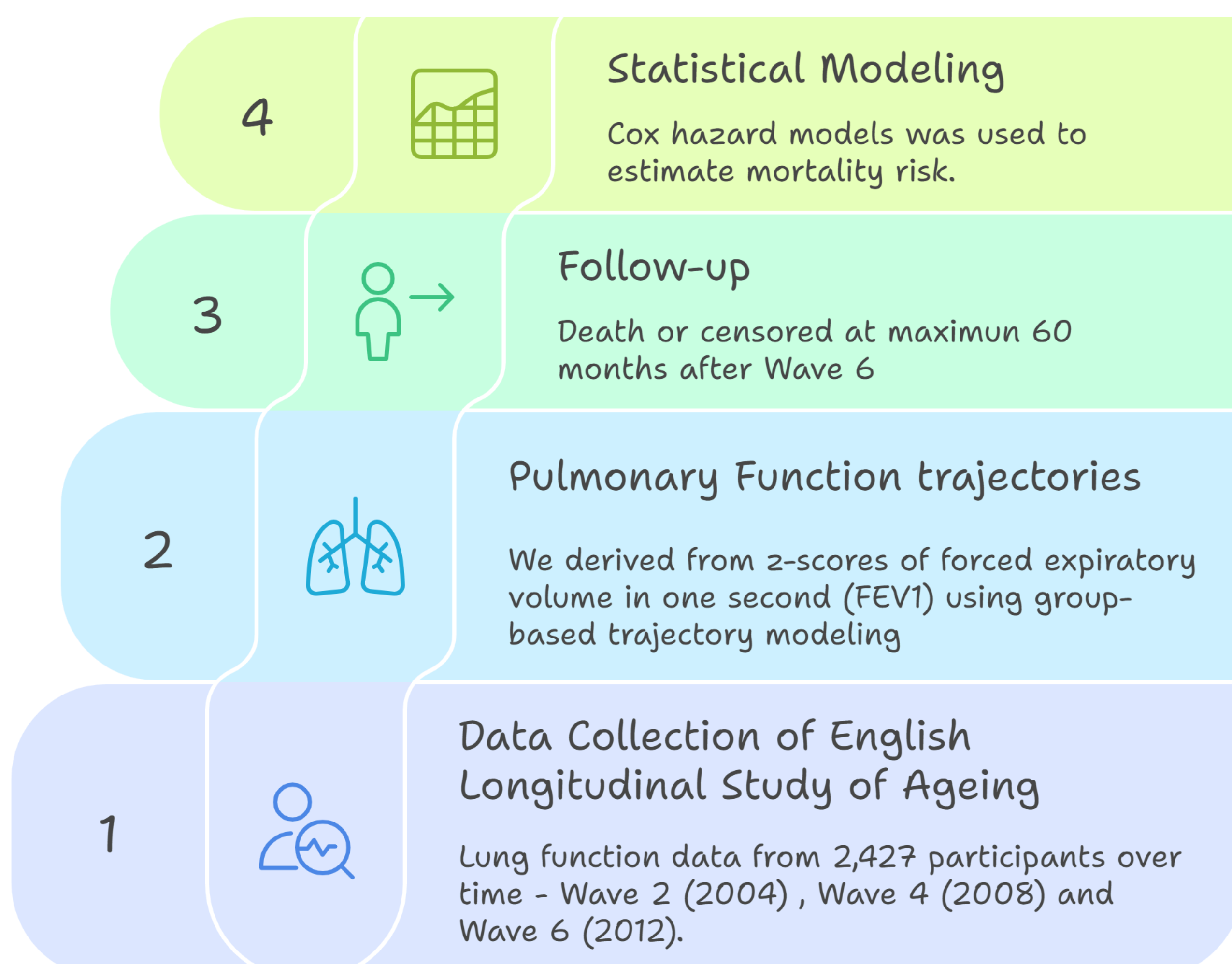


Methods

Figure 2. Survival function according to FEV1 trajectories, ELSA, 2004-2018



Analyzing Lung Function and Mortality Risk

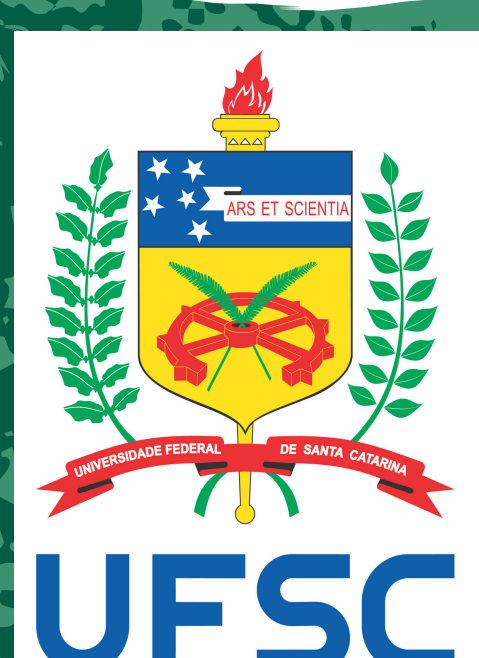


In the adjusted model, the increased mortality risk in the low PF trajectory compared to the high PF trajectory was significant only among women (2.25, 95% CI: 1.13–4.47).

Conclusions

This study identified three PF trajectories and their association with mortality, particularly in women, emphasizing the need to monitor PF in aging populations.

Acknowledgement



ione.schneider@ufsc.br

